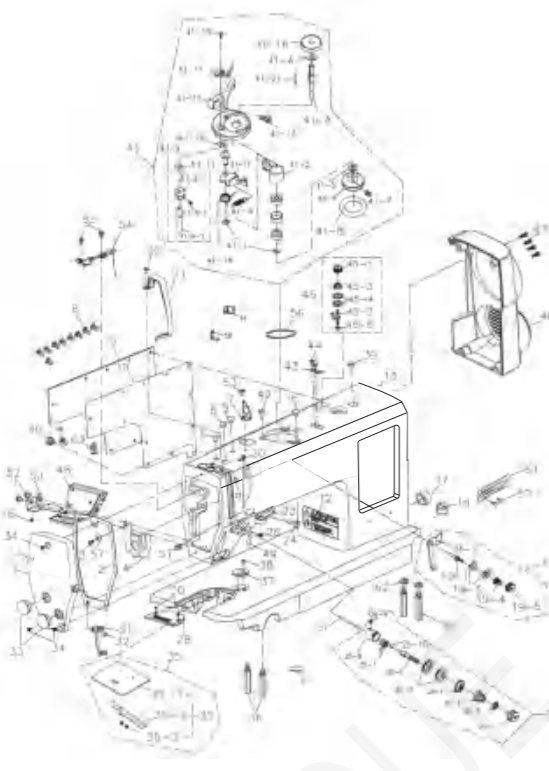


直驱式单步进电脑平缝机
Direct drive single step computer flat sewing machine

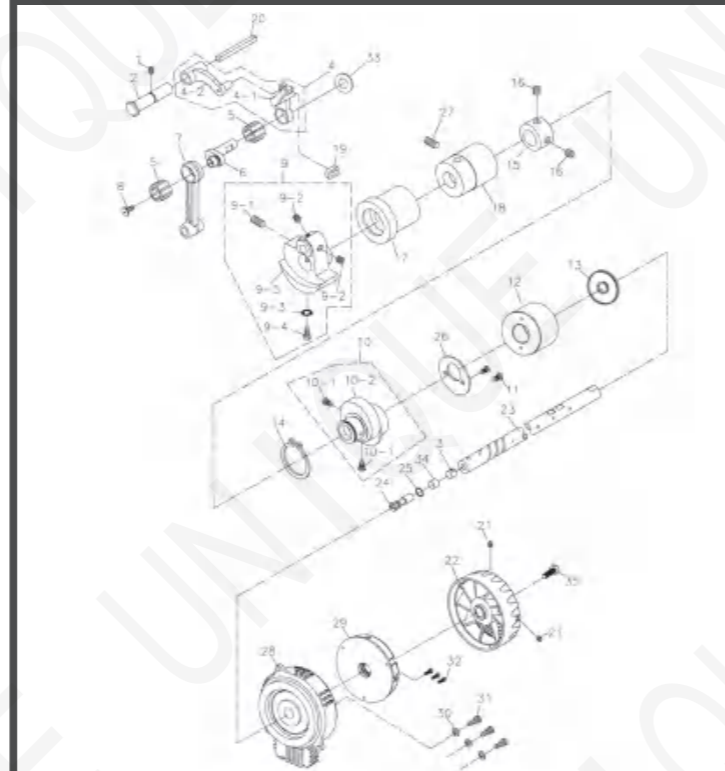
OX

1. 机壳部分/MACHINE FRAME&MISCELLANEOUS COVER COMPONENTS



序号 Ref. No.	新编号 new part No.	名称 Part name	Name of parts	数量 Qty	备注 Note
38	5074374008	卷边螺钉	Screw 3/16x40 L-8	1	
39	091001058	橡胶塞	Rubber plug	1	
40	289910028	操作面板出线槽盖	Rubber plug	1	
41	280001341	橡胶器组件	Rubber assembly	1	
41-1	991001041-1	挡圈E1	Ring E1	2	
41-2	991001041-2	挡圈E2	Bobbin head	1	
41-3	991001041-3	挡圈E3	Spool	1	
41-4	991001041-4	O型圈O9	O ring	1	
41-5	991001041-5	平垫圈P9	Flat washer	1	
41-6	991001041-6	地线轮	Winding wheel	1	
41-7	991001041-7	螺钉W5	Screw W5	2	
41-8	991001041-8	橡胶垫圈D9	Rubber washer	1	
41-9	991001041-9	板芯凸台螺母	Shuttle cam nut	1	
41-9-1	991001041-9-1	板芯凸台轮	Shuttle cam	1	
41-9-2	991001041-9-2	螺钉W5	Screw W5	1	
41-9-3	991001041-9-3	板芯夹轴	Shuttle clamp shaft	1	
41-11	991001041-11	平垫圈P9	Flat washer	2	
41-12	991001041-12	板芯凸台螺母	Shuttle cam nut	1	
41-13	991001041-13	螺钉W5	Screw W5	1	
41-14	991001041-14	板芯夹	Bobbin clip	1	
41-15	991001041-15	螺钉SM4.76	Screw SM4.76	2	
41-16	991001041-16	板芯座	Bobbin base	1	
41-17	991001041-17	弹簧打杆	Winding lever	1	
41-18	991001041-18	弹簧	Spring	1	
41-19	991001041-19	O型圈O9	O type sealing ring	1	
41-20	991001041-20	O型圈O9	O type sealing ring	1	
41-21	991001041-21	卡簧	Bobbin screw	1	
42	000000004	抽线器螺钉	Bobbin screw	1	
43	991001043	剪刀	Knife	1	
44	5093574005	剪刀刀座	Knife housing	1	
45	250001045	绕线器盖	Thread tension ass.	1	
45-1	280001045-1	夹线螺母	Tension nut	1	
45-2	991001045-2	夹线螺母	Tension nut	1	
45-3	991001045-3	夹线弹簧	Tension spring	1	
45-4	991001045-4	夹线板	Thread tension disk	1	
45-5	991001045-5	夹线螺母(下)	Tension nut	1	
46	288001046	电机罩壳	Motor housing	1	
47	M10050820	螺钉	Screw	1	
48	288001048	脚踏灯开关组件	Foot pedal switch assembly	1	
49	280001049	大皮壳	Presser bar thread guide	1	
50	280001050	脚踏灯开关支脚	Switch support for foot pedal	1	
51	S13574006	大线勾固定螺钉	Screw	1	
52	5094762006	脚踏灯开关固定螺钉	Screw	1	
53	S074374007	三角线勾螺钉	Screw	1	
54	991001052	抽线器组件	OIL plate assembly	1	
55	5093574006	抽线器固定螺钉	Screw	2	
56	991001056	抽线器螺母	Bobbin Washer	1	
57	600511017	针板垫片	Needle plate gasket	1	
58	730001058	线夹	Wire clip	1	
59	5094762006	线夹螺钉	Pin	1	
60	991001059	垫片	Washer plate	1	
61	288001060	垫片	Spring washer	2	
62	4230051064	垫片	Pin	1	
63	280001063	线夹	Pin	1	

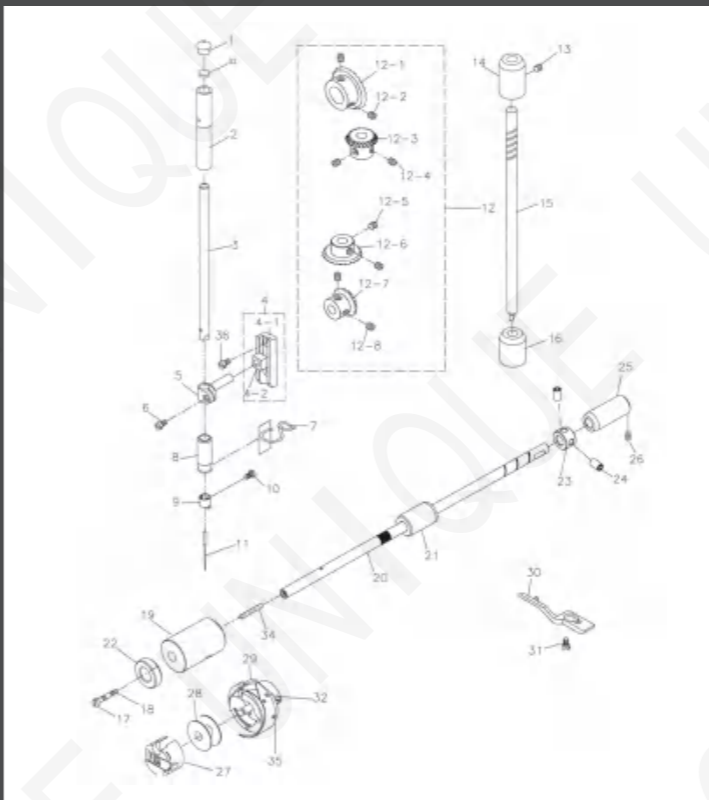
2. 上轴/挑线部件/MAIN SHAFT&THREAD-UP LEVER COMPONENTS



序号 Ref. No.	新编号 new part No.	名称 Part name	Name of parts	数量 Qty	备注 Note
1	991002001	挑线连杆螺钉	Screw 15/64x28 L=10.5	1	
2	991002002	挑线连杆轴	thread take-up crank shaft	1	
3	280002003	曲柄油质限制值	Roller felt	1	
4	991002004	挑线连杆轴套	thread take-up lever asm	1	
4	991002004H	挑线连杆轴套(厚料)	thread take-up lever asm (heavy duty)	1	
4-1	991002004-1	挑线杆	take-up lever	1	

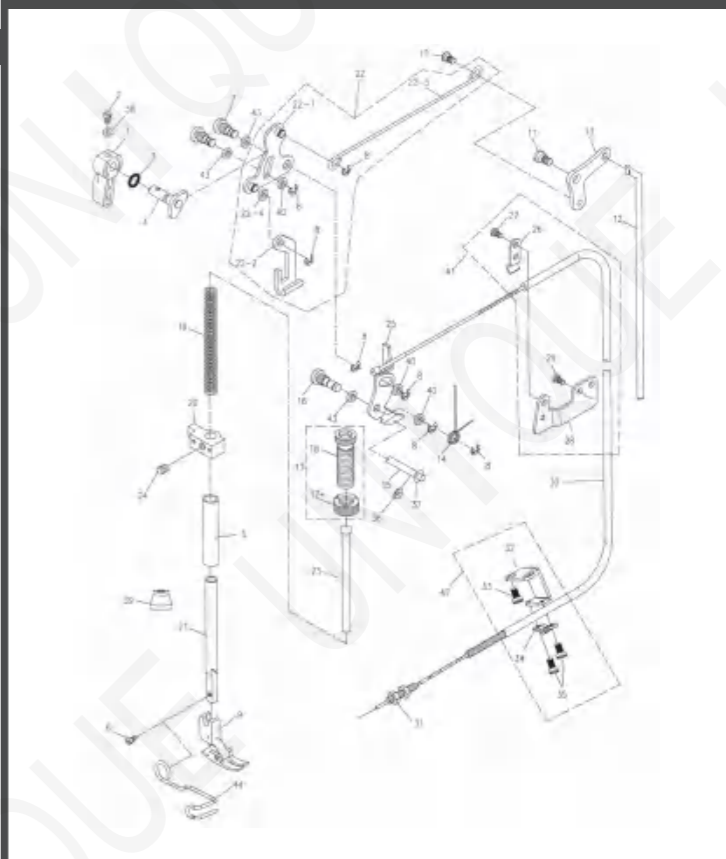
序号 Ref. No.	新编号 new part No.	名称 Part name	Name of parts	数量 Qty	备注 Note
51	991002001-1	挑线杆	take-up lever	1	
4-2	991002001-2	挑线连杆轴套	thread take-up lever asm	1	
4-2	991002001-2B	挑线杆	take-up lever	1	
5	991002005	挑线杆螺母	Needle bearing	1	
6	991002006	挑线杆轴套	Needle bar crank	1	
6	991002007H	挑线杆轴套(厚料)	Needle bar crank (heavy duty)	1	
7	991002007	挑线杆轴套	Needle bar crank nut	1	
8	991002008	挑线杆轴套螺母	Needle bar crank nut	1	
9	991002009	挑线杆轴套螺母	Needle bar crank nut	1	
9	991002009H	挑线杆轴套螺母(厚料)	Needle bar crank nut (heavy duty)	1	
9-1	S127142816	挑线杆轴套螺母	Screw 9/32x28 L=16	1	
9-2	S16254005	挑线杆轴套螺母	Screw 1/4x40 L=6	1	
9-3	991002009-3	挑线杆轴套螺母	Needle bar crank nut	1	
9-4	S077142815	挑线杆轴套螺母	Screw 9/32x28 L=15.5	1	
9-5	991002009-5	挑线杆轴套螺母	Needle bar crank nut	1	
10	991002010	挑线杆轴套螺母	Feed drive eccentric cam nut	1	
10-1	S07635011	挑线杆轴套螺母	Screw 1/4x40 L=11	1	
10-2	991002010-2	挑线杆轴套螺母	Feed drive eccentric cam	1	
11	5094074006	挑线杆轴套螺母	Screw 9/64x40 L=6	1	
12	991002012	挑线杆轴套螺母	Washer	1	
13	991002013	挑线杆轴套螺母	Oil seal of main shaft	1	
14	991002014	挑线杆轴套螺母	Screw 9/32x28 L=15.5	1	
15	991002015	挑线杆轴套螺母	Needle bar crank	1	
16	S07635011	挑线杆轴套螺母	Screw 1/4x40 L=11	1	
16-2	991002016-2	挑线杆轴套螺母	Feed drive eccentric cam	1	
17	5094074006	挑线杆轴套螺母	Screw 9/64x40 L=6	1	
18	991002018	挑线杆轴套螺母	Washer	1	
19	991002019	挑线杆轴套螺母	Main shaft front bushing asm	1	
20	991002020	挑线杆轴套螺母	Bushing intermediate	1	
21	991002021	挑线杆轴套螺母	Bobbin	1	
22	991002022	挑线杆轴套螺母	Thread take-up crank shaft bell	1	
23	991002023	挑线杆轴套螺母	Needle bar	1	
24	991002024	挑线杆轴套螺母	Needle bar	1	
25	289902010	挑线杆轴套螺母	Needle bar	1	
26	991002026	挑线杆轴套螺母	Main shaft adjusting pin	1	
27	991002027	挑线杆轴套螺母	Bobbin ring	1	
28	991002028	挑线杆轴套螺母	Thrust collar	1	
29	S13574006	挑线杆轴套螺母	Screw 15/64x28 L=10.5	1	
30	289902010	挑线杆轴套螺母	Needle bar	1	
31	M10050814	挑线杆轴套螺母	Screw	1	
32	991002032	挑线杆轴套螺母	Screw	1	
33	991002033	挑线杆轴套螺母	Washer	1	
34	991002034	挑线杆轴套螺母	Washer	1	
35	5074374005	挑线杆轴套螺母	Screw SM11/64x40 L=11	1	

3. 针杆/竖轴/下轴部件/NEEDLE BAR, UPRIGHT SHAFT&HOOK DRIVING SHAFT COMPONENTS



序号 Ref. No.	新编号 new part No.	名称 Part name	Name of parts	数量 Qty	备注 Note
1	991003001	针杆(厚料)	Needle bar	1	
2	991003002	针杆轴套	Needle bar bushing upper	1	
3	991003003	针杆轴套	Needle bar bushing lower	1	
3	991003003H	针杆轴套(厚料)	Needle bar bushing lower (heavy duty)	1	
4	991003004	针杆轴套螺母	Needle bar bushing nut	1	
4-1	991003004-1	针杆轴套螺母	Needle bar bushing nut	1	
4-2	991003004-2	针杆轴套螺母	Needle bar bushing nut	1	
5	991003005	针杆轴套螺母	Needle bar bushing nut	1	
6	S071574007	针杆轴套螺母	Screw 9/64x40 L=7	1	
7	991003007	针杆轴套螺母	Needle bar bushing lower	1	
8	991003008	针杆轴套螺母	Needle bar bushing lower	1	
8	991003008H	针杆轴套螺母(厚料)	Needle bar bushing lower (heavy duty)	1	
9	991003009	针杆轴套螺母	Needle bar bushing lower	1	
9	991003009H	针杆轴套螺母(厚料)	Needle bar bushing lower (heavy duty)	1	
10	991003010	针杆轴套螺母	Needle bar bushing lower	1	
11	991003011	针杆轴套螺母	Needle bar bushing lower	1	
12	991003012	针杆轴套螺母	Needle bar bushing lower	1	
13	991003013	针杆轴套螺母	Needle bar bushing lower	1	

4. 压杆部件/HAND LIFTER COMPONENTS

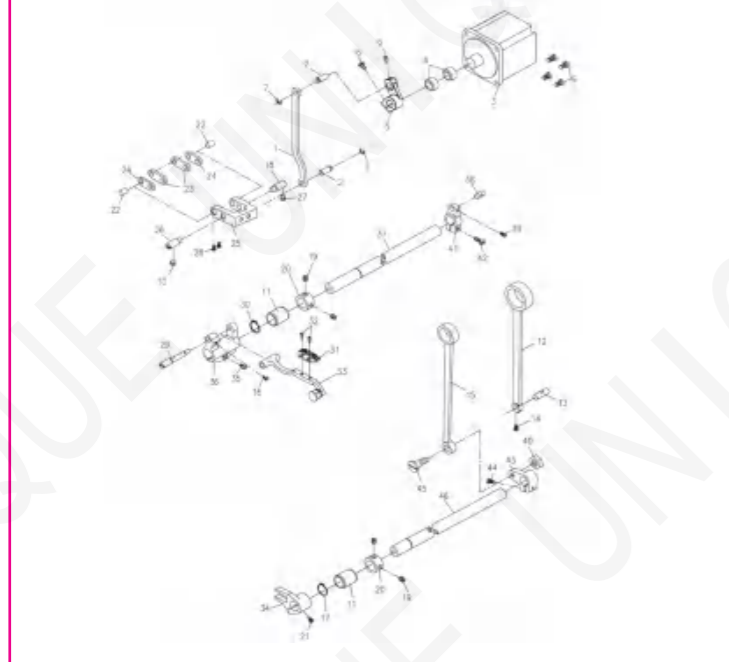


序号 Ref. No.	新编号 new part No.	名称 Part name	Name of parts	数量 Qty	备注 Note
1	991004001	压脚扳手	Hand lifter	1	
2	991004002	压脚扳手螺钉	Screw 9/64x40 L=10	1	
3	991004003	压脚扳手轴套	Rubber ring	1	
4	LB1112	压脚扳手轴套	hand lifter cam asm	1	
5	991004005	压脚轴套	Presser bar bushing lower	1	
6	S073574011	压脚螺钉	Screw 9/64x40 L=11	1	
7	991004007	前杆轴套	Link shaft	1	
8	991004008	卡簧	E-ring 5	2	
9	991004009	压脚部件	Presser foot asm	1	
9	991004009H	压脚部件(厚料)	Presser foot asm (Thick material)	1	
10	991004010	压脚轴套	Hinge screw	1	
11	991004011	后杆轴套	Hinge screw	1	
12	991004012	压脚轴套	Knee lifter connecting rod	1	
13	991004013	压脚轴套	Lifting lever link	1	
13	991004013-H	压脚轴套(厚料)	Lifting lever link (Thick material)	1	

序号 Ref. No.	新编号 new part No.	名称 Part name	Name of parts	数量 Qty	备注 Note
1	288001001	面框	Face plate	1	
2	288001002	面框垫	Face plate gasket	1	
3	S073164404	脚踏板螺钉	Screw 1/8x44 L=4	1	
4	280001004	脚踏板轴套	Arm oil shield	1	
5	991001005	橡胶圈	Rubber ring	2	
6	991001006	针杆轴套螺母	Needle pin	2	
7	991001007	脚踏板轴套	Thread guide roll	1	
8	S094762009	后盖螺钉	Screw 3/16x28 L=9	9	
9	280001009	后盖板	Side plate	1	
10	280001010	后盖板垫	Gasket	1	
11	280001011	面框轴套	Face plate	1	
12	991001012	安全指示器	Safety lens	1	
13	280001013	机壳组件	Machine cover	1	
14	730001014	线夹	Clamp	1	
15	280001015	检查指示	Inspection sign	1	
16	M09030506	支脚螺钉	Screw	4	
17	991001017	下轴孔套	Rubber plug	1	
18	991001018	穿线过线套(2孔)	Support core rubber	1	
19	280001019	小夹线器组件	Thread tension ass	1	
19-1	991001019-1	小夹线螺母	Small clip line screw	1	
19-2	991001019-2	小夹线过线板	Thread tension guide	1	
19-3	991001019-3	小夹线板	Thread tension disk	2	
19-4	991001019-4	小夹线簧	Thread tension spring	1	
19-5	280001019-5	小夹线螺母	Thread tension nut	1	
20	S14374006	小夹线螺母支脚螺钉	Screw	1	
21	991001021	挑线轴套	Thread take-up lever cover	1	
22	S094762006	挑线轴套螺钉	Screw 3/16x28 L=6	1	
23	991001023	右线钩	Arm thread guide right	1	
24	S074374006	右线钩螺钉	Screw 1/8x40 L=6	1	
25	281001025	松线器组件	Thread tension ass	1	
25-1	281001025-1	夹线螺母	Tension nut	1	
25-2	991001025-2	夹线止动板	Rotating stopper	1	
25-3	991001025-3	夹线簧	Rotating stopper	1	
25-4	991001025-4	夹线压板	Thread tension disk presser	1	
25-5	991001025-5	夹线板	Thread tension disk	2	
25-6	991001025-6	夹线螺母	Tension nut	1	
25-7	991001025-7	挑线器	Take-up spring	1	
25-8	991001025-8	挑线器(厚料)	Take-up spring	1	
25-9	991001025-9	挑线器轴套	Tension post socket	1	
25-10	S143574005	挑线器轴套螺钉	Screw 9/64x40 L=3.5	1	
25-11	991001025-11	O型圈	O ring	1	
26	S11952811	挑线器轴套螺钉	Screw 15/64x28 L=7	1	
27	LA1137	松线钉	Tension releasing	1	
28	991001028	针板(厚料/4排牙)	Throat plate	1	
28	991001028H	针板(厚料/3排牙)	Throat plate	1	
29	280001029	安全指示	Safety marking	1	
30	S0443740062	针板螺钉	Screw 1/8x40 L=6	2	
31	280001031	压脚轴套	Arm thread guide left	1	
32	S074374006	压脚轴套螺钉	Screw 1/8x40 L=6	1	
33	991001033	压脚轴套	Rubber plug	2	
34	S094762011	压脚轴套螺钉	Screw 3/16x28 L=8	3	
35	991001035	压脚轴套	Slide plate asm	1	
35-1	991001035-1	压脚轴套	Slide plate	1	
35-2	991001035-2	压脚轴套	Inf slide spring	1	
36	S082395002	压脚轴套	Screw 9/64x26 L=2.2	2	
36	991001036	压脚轴套	Inf slide spring	4	
37	280001037	压脚轴套	Butler stopper	1	

序号 Ref.No.	新编号 new part No.	名称 Part name	Name of parts	数量 Qty	备注 Note
14	991004022	松线板复位弹簧	Tension release return spring	1	
14	991004022	松线板复位材料(厚料)	Rest spring of base thread rest (thick material)	1	
15	991004027	松线轴	Tension release supporting pin	1	
16	991004056	松线板复位轴	Tension release shaft	1	
17	991004028A	调压螺母(厚料)	Presser adjusting screw nut (thick material)	1	
17+	991004027	调压螺母(厚料)	Presser adjusting screw nut (thick material)	1	
17+	991004029/III	调压螺母(厚料)	Presser adjusting screw nut (thick material)	1	
18	991004028	调压螺母(厚料)	Presser adjusting screw nut (thick material)	1	
18	991004028/III	调压螺母(厚料)	Presser adjusting screw nut (thick material)	1	
19	991004029	调压螺母(厚料)	Presser adjusting screw nut (thick material)	1	
19	991004029	调压螺母(厚料)	Presser adjusting screw nut (thick material)	1	
20	991004004	调压螺母(厚料)	Presser adjusting screw nut (thick material)	1	
20	288004006	调压螺母(厚料)	Presser adjusting screw nut (thick material)	1	
21	991004031	压脚	Presser bar	1	
22	281004019	前托杆组件	Knob lifting cross rod ass	1	
22-1	991004032-1	前托杆	Knob lifting cross rod	1	
22-2	991004032-2	前托杆螺母	Knob lifting cross rod nut	1	
22-3	180004022	前托杆垫圈	Knob lifting cross rod washer	1	
22-4	280004019-1	前托杆垫圈	Knob lifting cross rod washer	1	
23	991004033	调压螺母	Presser adjusting screw nut	1	
24	S126354006	调压螺母	Presser adjusting screw nut	1	
25	991004025	松线板复位轴	Tension release shaft	1	
26	991004017	松线板复位轴	Tension release shaft	1	
27	991004007	上压板紧固螺钉	Screw 3/8x40 L=7	1	
28	991004026	上压板板板	Wire holder bracket upper	1	
29	991004009	上压板组件紧固螺钉	Screw 3/16x28 L=6	1	
30	991004031	拉线(长)	Pull line(long)	1	
31	991004031-1	拉线(短)	Pull line(short)	1	
31	991004031-2	拉线(短)	Pull line(short)	1	
32	991004021	松线板复位轴	Tension release shaft	1	
33	991004021	松线板复位轴	Tension release shaft	1	
34	991004021	松线板复位轴	Tension release shaft	1	
35	991004021	松线板复位轴	Tension release shaft	1	
36	991004021	松线板复位轴	Tension release shaft	1	
37	991004021	松线板复位轴	Tension release shaft	1	
38	991004021	松线板复位轴	Tension release shaft	1	
39	991004021	松线板复位轴	Tension release shaft	1	
40	991004021	松线板复位轴	Tension release shaft	1	
41	991004021	松线板复位轴	Tension release shaft	1	
42	991004021	松线板复位轴	Tension release shaft	1	
43	991004021	松线板复位轴	Tension release shaft	1	
44	991004021	松线板复位轴	Tension release shaft	1	

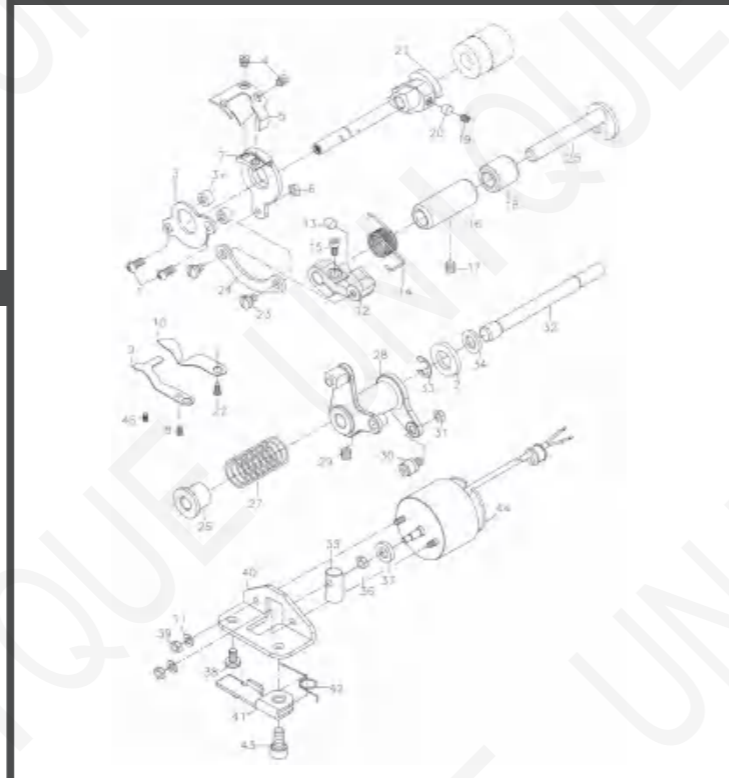
5. 送料部件/FEED MECHANISM COMPONENTS



序号 Ref.No.	新编号 new part No.	名称 Part name	Name of parts	数量 Qty	备注 Note
1	288004003	送料轴	Feed roller shaft	1	
2	288004002	送料轴衬套	Feed roller shaft bushing	1	
3	288005003/IX	送料轴衬套	Feed roller shaft bushing	1	
4	288004041	送料轴衬套	Feed roller shaft bushing	1	
5	288005019	送料轴衬套	Feed roller shaft bushing	1	
6	M180040714	螺母	Nut	1	
7	288004040	螺母	Nut	1	
8	M180050822	螺母	Nut	1	
9	S14374006	螺母	Nut	1	
10	991005065	螺母	Nut	1	
11	991005049	螺母	Nut	1	
12	991005012	螺母	Nut	1	
13	991005013	螺母	Nut	1	
14	S073674005	螺母	Nut	1	
15	991005015	螺母	Nut	1	
16	S094374007	螺母	Nut	1	
17	991005020	螺母	Nut	1	
18	991005059	螺母	Nut	1	
19	S126354004	螺母	Nut	1	
20	991005015	螺母	Nut	1	
21	S084374012	螺母	Nut	1	
22	991005022	螺母	Nut	1	
23	991005025	螺母	Nut	1	

序号 Ref.No.	新编号 new part No.	名称 Part name	Name of parts	数量 Qty	备注 Note
24	991005004	螺母	Nut	1	
25	288004011	螺母	Nut	1	
26	991005020	螺母	Nut	1	
27	991005001	螺母	Nut	1	
28	S123574005	螺母	Nut	1	
29	991005029	螺母	Nut	1	
30	991005030	螺母	Nut	1	
31	017113	螺母	Nut	1	
31	991005031	螺母	Nut	1	
31	059304001	螺母	Nut	1	
32	S073184006	螺母	Nut	1	
33	991005033	螺母	Nut	1	
33	991005030	螺母	Nut	1	
34	991005034	螺母	Nut	1	
35	S074782812	螺母	Nut	1	
36	991005052	螺母	Nut	1	
37	991005037	螺母	Nut	1	
38	991005028	螺母	Nut	1	
39	S073574006	螺母	Nut	1	
40	S217142805	螺母	Nut	1	
41	991005041	螺母	Nut	1	
41	991005040	螺母	Nut	1	
42	S074782815	螺母	Nut	1	
43	991005045	螺母	Nut	1	
44	991005046	螺母	Nut	1	

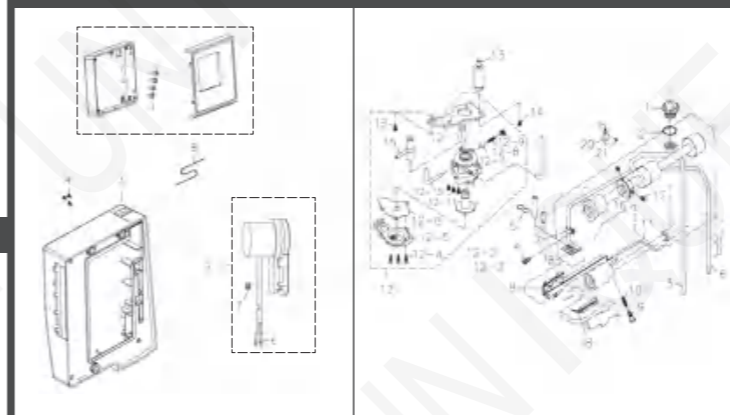
6. 自动切剪部件/THREAD TRIMMER COMPONENTS



序号 Ref.No.	新编号 new part No.	名称 Part name	Name of parts	数量 Qty	备注 Note
1	S084374012	螺母	Nut	1	
2	991005049	螺母	Nut	1	
3	991005001	螺母	Nut	1	
3+	991005012	螺母	Nut	1	
4	991005049	螺母	Nut	1	
5	991005005	螺母	Nut	1	
5	991005015	螺母	Nut	1	
6	991005006	螺母	Nut	1	
7	991005007	螺母	Nut	1	
7	99110008	螺母	Nut	1	
8	S04374006	螺母	Nut	1	
9	991005003	螺母	Nut	1	
10	991005010	螺母	Nut	1	
11	991005049	螺母	Nut	1	
12	991005012	螺母	Nut	1	
13	991005013	螺母	Nut	1	
14	991005015	螺母	Nut	1	
15	S094374014	螺母	Nut	1	
16	991005016	螺母	Nut	1	
17	S12942806	螺母	Nut	1	
18	991005018	螺母	Nut	1	
19	S15015010	螺母	Nut	1	
20	991005020	螺母	Nut	1	
21	991005021	螺母	Nut	1	
22	S07374006	螺母	Nut	1	
23	991005023	螺母	Nut	1	
24	991005024	螺母	Nut	1	
25	991005025	螺母	Nut	1	
26	991005026	螺母	Nut	1	
27	991005027	螺母	Nut	1	
28	991005028	螺母	Nut	1	
29	S118254006	螺母	Nut	1	
30	991005030	螺母	Nut	1	

序号 Ref.No.	新编号 new part No.	名称 Part name	Name of parts	数量 Qty	备注 Note
31	991005031	螺母	Nut	1	
32	991005032	螺母	Nut	1	
33	991005033	螺母	Nut	1	
34	991005034	螺母	Nut	1	
35	991005035	螺母	Nut	1	
36	991005036	螺母	Nut	1	
37	991005037	螺母	Nut	1	
38	S07492810C	螺母	Nut	1	
39	991005039	螺母	Nut	1	
40	991005040	螺母	Nut	1	
41	991005041	螺母	Nut	1	
42	991005042	螺母	Nut	1	
43	991005043	螺母	Nut	1	
44	S188281011	螺母	Nut	1	
45	S123574012	螺母	Nut	1	

7. 电子选线器, 操作面板部件/ELECTRONIC CONDUCTOR HOLDER NEEDLE SELECTION BOX COMPONENTS

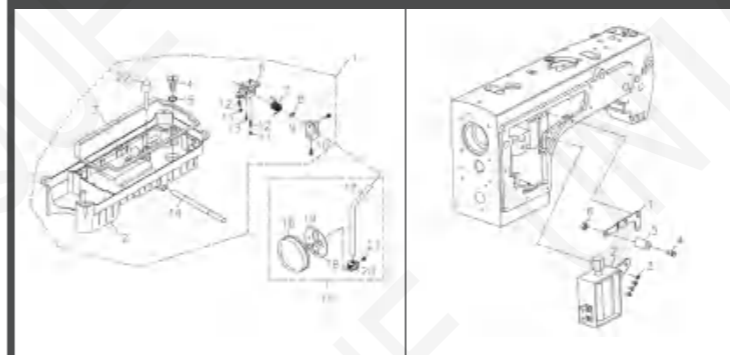


序号 Ref.No.	新编号 new part No.	名称 Part name	Name of parts	数量 Qty	备注 Note
1	288004003	送料轴	Feed roller shaft	1	
2	S073574008	螺母	Nut	4	
3	991005009	螺母	Nut	1	
4	S074782820	螺母	Nut	3	
5	288004006	螺母	Nut	1	
6	991005008	螺母	Nut	1	
7	S11782805	螺母	Nut	1	
8	288004009	螺母	Nut	1	

8. 润滑/绕线部件/OIL LUBRICATION COMPONENTS

序号 Ref.No.	新编号 new part No.	名称 Part name	Name of parts	数量 Qty	备注 Note
1	991005001	油窗	Oil sight window	1	
2	991005002	油窗O型圈	Oil sight window O-ring	1	
3	991005003	主油室油封	Main shaft oil seal	1	
4	S094782806	油室盖螺钉	Oil chamber cover screw	1	
5	991005005	油室盖垫圈	Oil chamber cover gasket	1	
6	991005006	油室盖	Oil chamber cover	1	
7	991005007	油室盖垫圈	Oil chamber cover gasket	1	
8	991005008	送料轴油封	Feed roller shaft oil seal	2	
9	991005009	送料轴油封螺母	Feed roller shaft oil seal nut	1	
10	991005010	送料轴油封垫圈	Feed roller shaft oil seal gasket	1	
11	288006011EP	送料轴油封	Feed roller shaft oil seal	1	
12	991005012	油室盖	Oil chamber cover	1	
12-1	991005012-1	油室盖	Oil chamber cover	1	
12-2	991005012-2	油室盖	Oil chamber cover	1	
12-3	991005012-3	油室盖	Oil chamber cover	1	
12-4	991005012-4	油室盖	Oil chamber cover	1	
12-5	991005012-5	油室盖	Oil chamber cover	1	
12-6	991005012-6	油室盖	Oil chamber cover	1	
12-7	991005012-7	油室盖	Oil chamber cover	1	
12-8	991005012-8	油室盖	Oil chamber cover	1	
12-9	991005012-9	油室盖	Oil chamber cover	1	
12-10	991005012-10	油室盖	Oil chamber cover	1	
12-11	S078280308	油室盖	Oil chamber cover	3	
13	991005015	油室盖	Oil chamber cover	1	
14	S074374010	油室盖	Oil chamber cover	1	
15	991005015	油室盖	Oil chamber cover	1	
16	991005016	油室盖	Oil chamber cover	1	
17	S14374008	油室盖	Oil chamber cover	2	
18	991005019	油室盖	Oil chamber cover	1	
19	S2818006	油室盖	Oil chamber cover	1	
20	288004008	油室盖	Oil chamber cover	1	
20	991005018	油室盖	Oil chamber cover	1	
21	S094782806	油室盖	Oil chamber cover	1	

9. 油盘部件/OIL RESERVOIR COMPONENTS



序号 Ref.No.	新编号 new part No.	名称 Part name	Name of parts	数量 Qty	备注 Note
1	991005001	油窗	Oil sight window	1	
2	991005002	油窗O型圈	Oil sight window O-ring	1	
3	991005003	主油室油封	Main shaft oil seal	1	
4	S094782806	油室盖螺钉	Oil chamber cover screw	1	
5	991005005	油室盖垫圈	Oil chamber cover gasket	1	
6	991005006	油室盖	Oil chamber cover	1	
7	991005007	油室盖垫圈	Oil chamber cover gasket	1	
8	991005008	送料轴油封	Feed roller shaft oil seal	2	
9	991005009	送料轴油封螺母	Feed roller shaft oil seal nut	1	
10	991005010	送料轴油封垫圈	Feed roller shaft oil seal gasket	1	
11	288006011EP	送料轴油封	Feed roller shaft oil seal	1	
12	991005012	油室盖	Oil chamber cover	1	
12-1	991005012-1	油室盖	Oil chamber cover	1	
12-2	991005012-2	油室盖	Oil chamber cover	1	
12-3	991005012-3	油室盖	Oil chamber cover	1	
12-4	991005012-4	油室盖	Oil chamber cover	1	
12-5	991005012-5	油室盖	Oil chamber cover	1	
12-6	991005012-6	油室盖	Oil chamber cover	1	
12-7	991005012-7	油室盖	Oil chamber cover	1	
12-8	991005012-8	油室盖	Oil chamber cover	1	
12-9	991005012-9	油室盖	Oil chamber cover	1	
12-10	991005012-10	油室盖	Oil chamber cover	1	
12-11	S078280308	油室盖	Oil chamber cover	3	
13	991005015	油室盖	Oil chamber cover	1	
14	S074374010	油室盖	Oil chamber cover	1	
15	991005015	油室盖	Oil chamber cover	1	
16	991005016	油室盖	Oil chamber cover	1	
17	S14374008	油室盖	Oil chamber cover	2	
18	991005019	油室盖	Oil chamber cover	1	
19	S2818006	油室盖	Oil chamber cover	1	
20	288004008	油室盖	Oil chamber cover	1	
20	991005018	油室盖	Oil chamber cover		