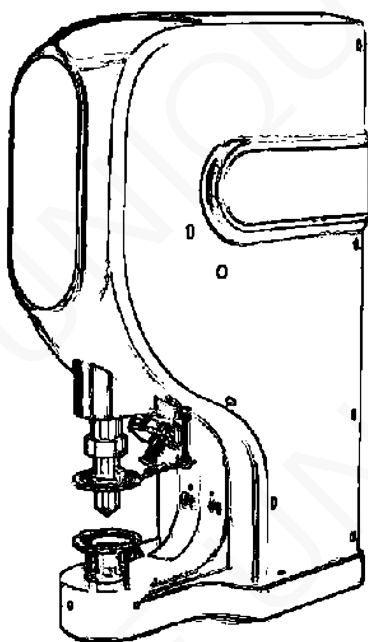


伺服装钮机

SERVO BUTTON MACHINE

使用说明书

INSTRUCTION MANUAL



前言

Preface

注意事项

此装钮机虽然有安全装置，在调整时严禁把手伸入冲模之间，严禁用手来测试安全距离。如违反操作而导致发生事故厂方概不负责。

Note

Although this button set-in machine doesn't need any safety device , when in work adjustment , never stretch hands between the die . If the accident is caused by breaching the operation , the factory takes no responsibility.

用户须知

1. 操作前请务必仔细阅读此使用说明书；
 2. 设备外壳要安全接地。
 3. 操作人员往模具装钮扣时，严禁踩下脚踏拉杆；
 4. 工作结束或暂离机器时，请一定关闭好电源。
1. Do read the instruction carefully before operation.
 2. The equipment outer couermg must Safety earthomg
 3. When the operators mount the buttons to the mold , do not step on the pedal Pull rod.
 4. When the work is finished or leave the machine temporarily , be sure to turn off the power.

用途

此装钮机适用于各类服装，针织成衣、羽绒服、牛仔类服装、鞋帽和皮革、塑料、帐篷、帆布制品上装钉钮扣，用途广泛。通过调节压力大小,速度快慢来改变钉扣压力，可满足不同厚度面料及特种纽扣的装订要求，集多种装钮机之优点，操作区域广泛、方便，性能稳定。

Usage

Servo button machine is suitable for binding button on all kinds of garments , such as knitted garments , down jackets , cowboy clothing , shoes and hats , leather clothing , plastic , tents and canvas products , with a wide range of usages . Through adjusting the pressure and speed to change the presstire of the button , it can satisfy the different binding requir ement of fabrics of all thickness and special buttons. Gathering the advantages of various button Set-in machines. wlth the characteristics of wide operating area , convenience and stable performance.

一、操作说明

Operating Instructions

1. 接通电源(P3-6) (位置开关)

2. 更换/安装模具

将上下模具取出更换后, 要根据实际用途调整模具之间的间隙, 按住控制面板中的正转或反转来调节上模座(P4-16)实现微调到自己需要的位置。

3. 调节安全环

将上、下压环松开, 踩下脚踏板到底不要松开。在下模具高度与下压环保持水平面时, 固定下环后根据工作用料的厚度来调节安全距离, 确保手指不会进入环内, 固定上环后将脚踏板松开即可。

4. 设置转速

长按操控面板功能键, 显示屏左上显示“EPD”字时, 按面板镭射灯增加转速, 按面板照明灯减少转速, 之后重新按功能键一次切换到计数模式即可正常工作。

1.Put on the machine (P3-6) (Rear Switch)

2.Replacement / installation of mold

After the replacement of the upper and lower mold removal, mold to adjust the gap between the actual use, hold down the control panel forward or backward to adjust the die holder (P4-16) to realize they need to fine-tune the position.

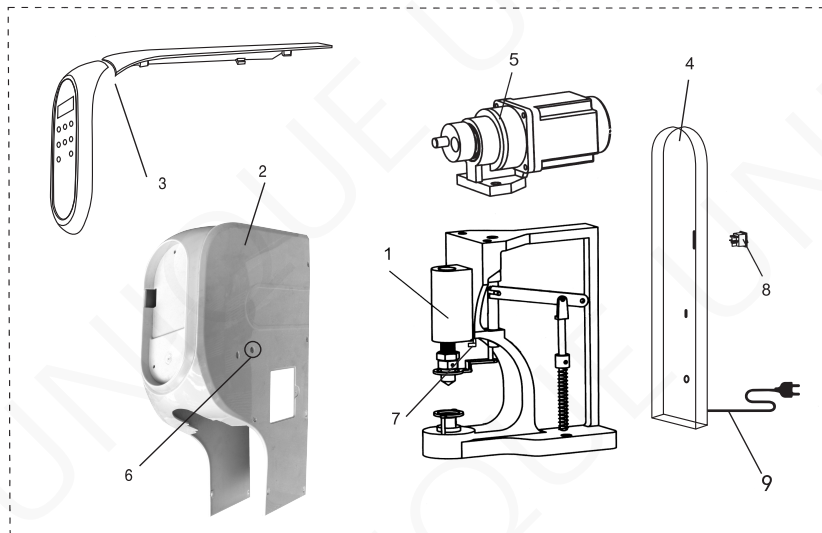
3.Regulating safety ring

The upper and lower pressure ring release, depress the foot pedal in the end not to release it. Lower height and lower fixed mold pressure ring to adjust the water level to keep a safe distance from the work under the ring according to the thickness of the material to ensure that the fingers do not enter the ring, the ring after a fixed pedals can loosen.

4.Set Speed

Press the control panel function keys, see the display when a word and press the upper left panel is to increase the speed of laser light, according to the panel lights is to reduce speed, then press the function key again to switch to the three-count mode to work properly.

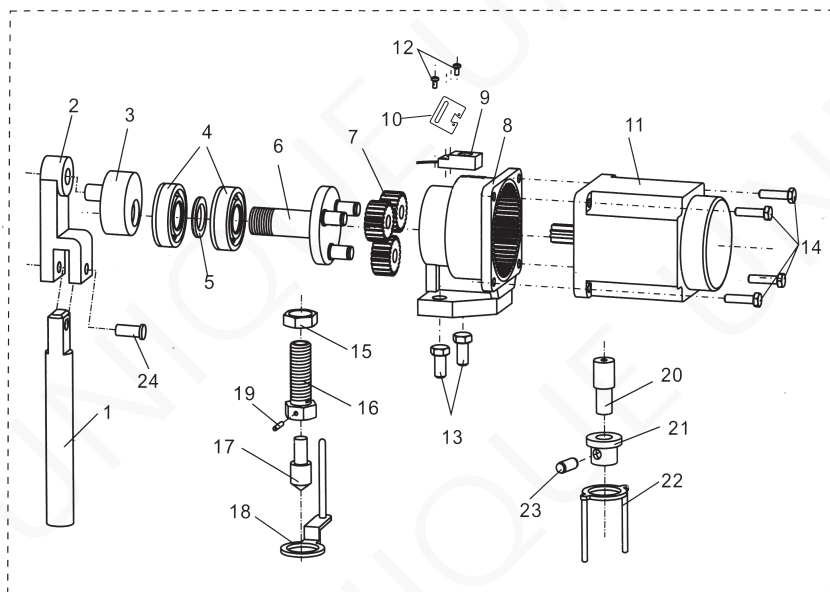
二、机壳分组件 Components of the machine



序号 NO.	名称 Description.
1	机座 Base
2	塑料外壳 Plastic housing
3	面板外罩 Panel cover
4	后盖板 Back Cover
5	动力组合 Combination of power
6	注油孔 Oil hole
7	照明灯 LED Floodlight
8	电源开关 Power switch
9	电源线 Power cord

三、电机、主轴分组件

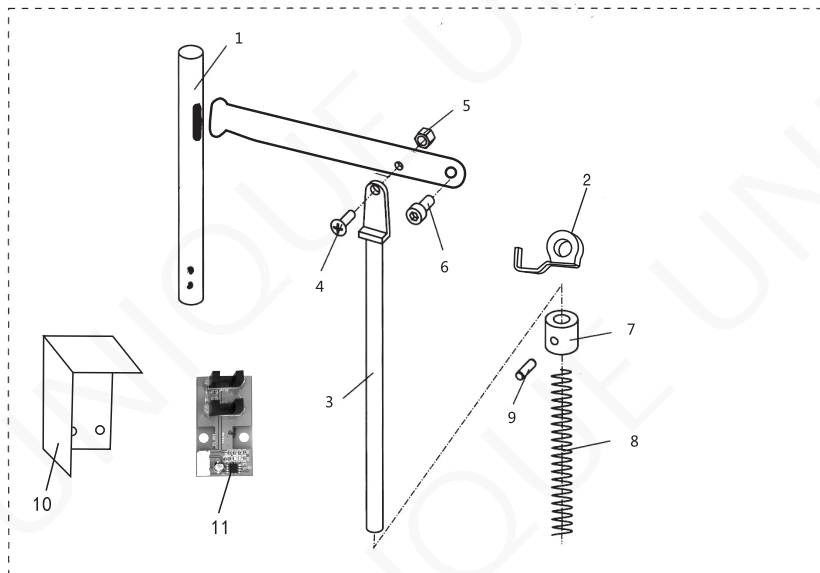
Components of electromotor and spindle



序号 NO.	名称 Description.
1	纵轴 Vertical
2	连杆 Joint staff
3	偏心轮 Eccentric wheel
4	轴承 Bearing
5	垫圈 Washer
6	主轴 Main shaft
7	齿轮 Gear
8	齿轮箱 Gear box
9	感应开关 Sensor Switch
10	感应开关支架 Switch Bracket
11	电机 Motor
12	半圆头M3X10 Button head M3X10

序号 NO.	名称 Description.
13	丝杆M10X50 Screw M10X50
14	内六角M5X20 Sxrew M5X20
15	紧固螺母M16X1.5 Nut M16X1.5
16	上模座 Seat of up mold
17	上模 Mold
18	上模压环 Mold pressure ring
19	无头内六角M5X5 Sxrew M5X5
20	下模 Mold
21	下模套 Seat of mold
22	下模压环 Mold pressure ring
23	无头内六角 Sxrew M5X16
24	纵轴销 Upright shaft rod

四、零件分组件 Components of parts

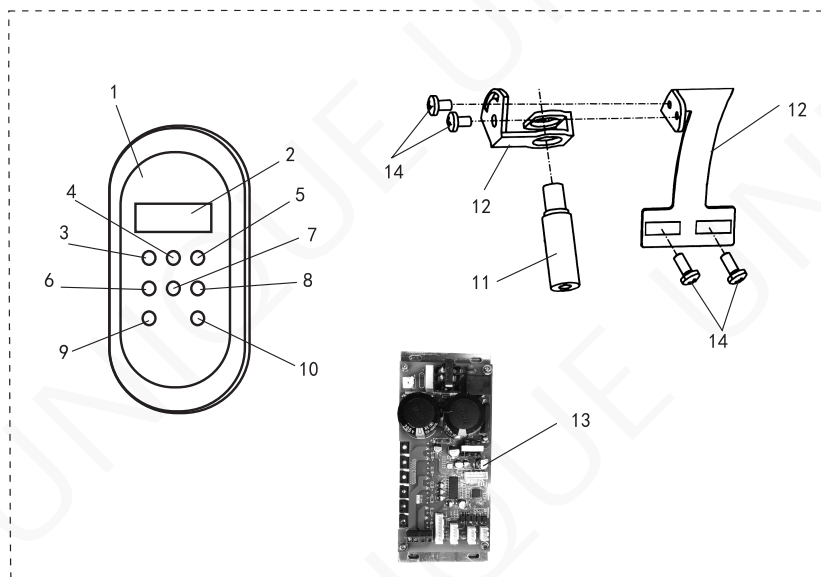


序号 NO.	名称 Description.
1	压环导杆 Pressure ring guide rod
2	光电行程板 Photoelectric Travel Plate
3	拉杆 Trolley
4	半圆头螺丝M5X12 Button head screws M5X12
5	防松螺帽 M5

序号 NO.	名称 Description.
6	内六角M5X20 Sxrew M5X20
7	挡圈 Washer
8	复位弹簧 The return spring
9	无头内六角M5X5 Sxrew M5X5
10	光电开关防油壳 Oil proof shell
11	光电开关 Photoelectric switch

五、操作面板、灯件分组件

Components of the operation panel and lemp



序号 NO.	名称 Description.
1	操作面板 Operation panel
2	显示屏 Display screen
3	功能键 Menu
4	清零键 Clearing
5	镭射灯键 Laser lamp
6	正转键 Forward
7	报警灯键 Warming

序号 NO.	名称 Description.
8	反转键 Reversion
9	照明灯键 Lamp
10	调整灯键 Adjustment
11	镭射灯 Laser light
12	镭射灯灯架 Laser lamp holder
13	电脑板 Computer board
14	半圆头螺丝M4X8 Button head screws M4X8

六、主要技术参数

Mostly ethnic parameter

电压 Voltage	频率 Frequency	功率 Power	最高转速 Rotation	行程 Punch Distance	机头重量 Weight
180-240V	50-60Hz	550w	5000 R/m	42mm	15Kg

七、可能发生的故障、原因及排除方法

The possible faults , reasons and troubleshooting method

故障 Faults	原因 Cause	解决方法 Resolution
钮子装订过松，面料相对转动 Button is bound too loose , Fabrics turn relatively	装模螺钉位过高 Die mounting Screw PO Stlton is too high	上调整装模螺钉到合适位置 Upward adjusting the die mounting screw to the right place
钮子冲偏可钮眼变小 The button is punched deflected, while the button hole is getting smaller	装模螺钉位过低 Die mounting screw position is too low	下调整装模螺钉到合适位置 Downward adjusting the die mounting screw to the right place
不冲 Don't punch	检查行程开关 Check trip switch 检查保险环 Check protective ring	必要时更换行程开关 Change trip switch 根据布料的不同厚度上下调节 To do an up-down adjustment according to the thickness
显示屏显示 "E03" The display shows the "E03"	上模行程过低 电机感应失灵 Too low upper die stroke Induction motor failure	调整上模行程 关闭电源重启 Adjust the upper die stroke Turn off the power to restart
显示屏显示 "E11" The display shows the "E11"	行程过头 Punch continuously 感应开关失灵 Proximity switch failure	关闭电源重启 Turn off the power to restart 更换感应开关 Exchange proximity switch

八、附件 Attachment

序号 Serial No.	名称 Description	数量 Quantity
1	说明书 User' S Manual	1
2	附件包 Accessory bag	1
3	合格证 Certificate of conformity	1

感谢购买本公司的产品。

为了安全地使用，本机一定要可靠接地。请保管好使用说明书，以便随时查阅。封本产品有不明之处，请向代理商或本公司营业部门询问。

Thank you to purchase our products,

In order that you can use safely, this machine must be done a reliable grounding. Please keep the user'S manual well, So that you can look up at any time. Please consult to the agent or business department of our company if you have any problem.