

UN-SL8

Intelligent fabric cutting machine
(Double cutter head, three guide column high-end head)



Blade cooling system



Vacuum stepless speed change



Compressed air digital control



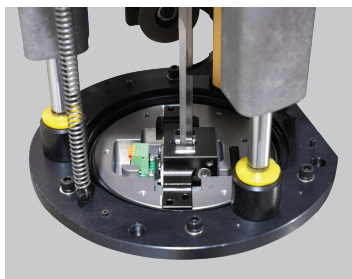
Crash quick reset device



Global top grid configuration

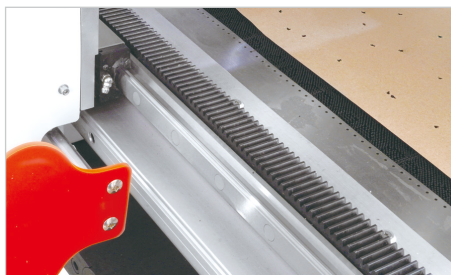


Product features



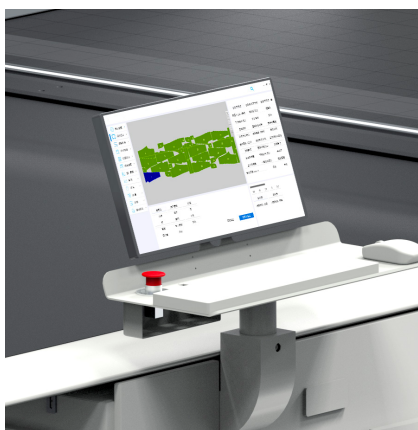
Internal and external cutting head structure:

Carrying capacity is more stronger, accuracy is more stable. Fixed oscillating motors are more stable than conventional structures



Double servo gear and rack drive:

Upgrade from unilateral drive to double drive, steel direct connection, high positioning accuracy, strong steel, fast response, and stronger transmission synchronization.



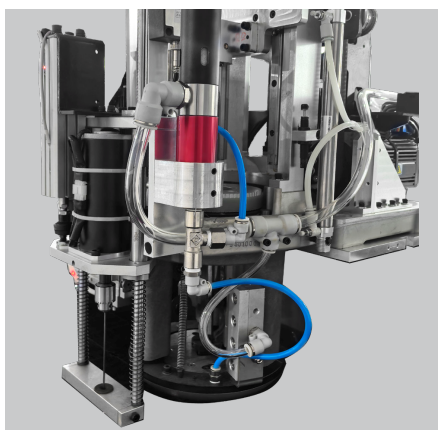
Hardware Control Digitization

Constant pressure real-time adjustment

The actual pressure value of the compressed air is monitored in real time by the sensor, and the system automatically performs suction compensation.

Vacuum stepless speed change

The vacuum adopts stepless speed change, and the negative pressure in the cutting area can reach -22Kpa;



Knife cooling system

Blade cooling device to reduce high temperature during cutting, suitable for chemical fiber materials;

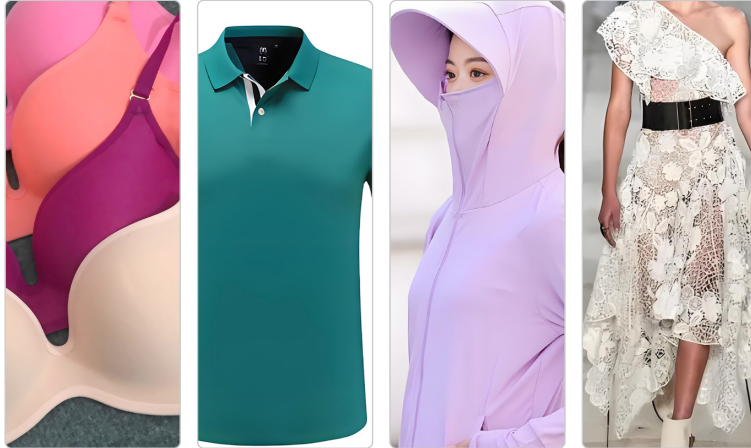


Crash quick reset device

The beam has a collision quick reset device, which effectively protects key parts and personal safety;

Scope of application

Focus on cutting all kinds of knitted underwear fabrics that cannot be cut manually.



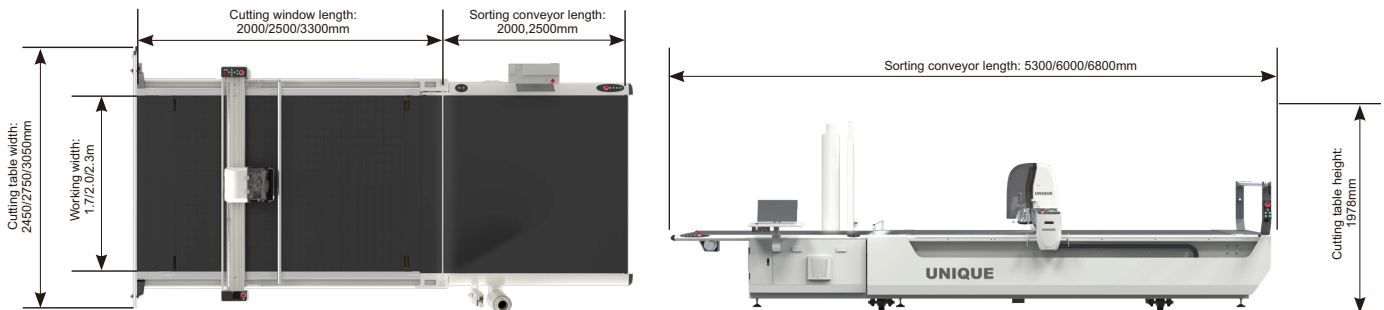
Seamless underwear

T-shirt

Sun-proof clothing

Lace

Dimensions



Technical parameter

Product Series	UN-SL8					
	UN-SL8-3317/3320/3331			UN-SL8-2517/2520/2523		
Model	UN-SL8-3317/3320/3331			UN-SL8-2517/2520/2523		
Effective cutting range	3.3X1.7M	3.3X2M	3.3X3.1M	2.5X 1.7M	2.5X2M	2.5X2.3M
Length	6.8M(Extended to 7.5 meters)			6.0M		
Totalweight ofequipment	3.6T	3.8T	5T	3.3T	3.5T	3.7T
Width	2.45M	2.75M	4.2M	2.45M	2.75M	3.05M
Height	1978mm/1988mm					
Table height	800-850mm					
Effective cutting height(after vacuum adsorption)	80mm					
Power supply	Three-phase 380V/50Hz					
Totalinstalled capacity	25KW					
Average power consumption	12KW					
Airsource(dryand clean compressedair)	0.5-0.6MPa 160L/min					
Maximum speed	80m/min					
Average cutting speed	12m/min					
Maximum acceleration	30m/s ²					
Maximum vibration frequency	4000r/min					
Blade Specifications	High-speed tool steel (HSS) SL8: SKH9 365x8.5x3/2.4/2					
Operating system	WINDOWS					
CAD compatible	CUT、PLT、DXF、GGT、ISO、GBR					
Maximum vacuum negative pressure	Negative pressure 18-22kpa					