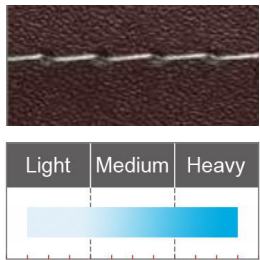


GC303-1SB

Computerized up and bottom feed lockstitch sewing machine

With stepper motor



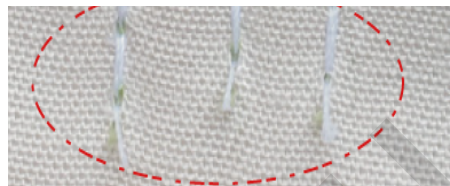
Product features

- Digitally adjust the needle distance, easy to use.
- Can be set to sew 9 kinds of different pattern stitches.
- Ultra-quiet back reverse stitch, and the feeding is stable.
- Shorter thread end: the length of thread left on the cloth after trimming is less than 3mm.
- With standard automatic presser foot lift function, the height of the presser foot is adjustable.

Function and configuration



Stepper motor controls the stitch distance, accurate to 0.1mm, can lock the stitch length as demand to avoid random adjustment.



Turn on the narrow stitch function to add one dense stitch before trimming (or add more stitches sewing) to keep the thread ends on the cloth after trimming.



Stepper motor control, can be set to sew 1-9 kinds of pattern stitches.

Scope of application



Suitable for heavy materials such as bags, leather, sofas, car seat cushions, foot pads etc.

Technical parameter

GC303-1SB	DPx5 18-23#	11	★	★	★	★	★	★	6-13	2500	680x255x495	46.5/41